

Plates, Frames and Modular Connector Fittings

1-Gang and 2-Gang "KP" Plates	Color	Catalog Number	Catalog Number	Catalog Number	Catalog Number	Catalog Number
	Black	KP8BK	KP26BK	KP1BK	KP7BK	KP720BK
	White	KP8W	KP26W	KP1W	KP7W	KP720W
	Off. White	KP8 Duplex	KP26 Style Line®	KP1 Toggle	KP7 Recept. (1.41 ID)	KP720 Recept. (1.60 ID)
	Black	KP14BK	KP212BK	KP2140BK	KP2162BK	KP2163BK
White	KP14W	KP212W	KP2140W	KP2162W	KP2163W	
Off. White	KP14 Blank	KP212 Coax (2)	KP2140 Jack/Coax	KP2162 Modular Jacks (2)	KP2163 Modular Jacks (3)	
Black	KPORTBK	KPPANBK	KPIMBZBK	3-Unit iSTATION (Accepts all Hubbell iSTATION Modules located in Network Wiring section Y)		
White	KPORTW	KPPANW	KPIMBZW			
Off. White	KPORTOW Ortronics Series II® Data Module	KPPANOW Panduit Mini-Com® Data Module	KPIMBZOW			
Black	KP82BK	KP262BK	KP2BK	KP24BK		
White	KP82W	KP262W	KP2W	KP24W		
Off. White	KP82 2-Gang Duplex	KP262 2-Gang Style Line®	KP2 2-Gang Toggle	KP24 2-Gang Blank		

Note: 2-Gang "KP" plates, for use with PT12TGB and PW1TGB only.

Comm. "IFP" Plates & Frames	Color	Catalog Number	Catalog Number	Catalog Number	Catalog Number	Catalog Number
	Office	IFP126OW	ISF2OW	ISF3OW	ISF4OW	ISF6OW
	White	Style Line®	Style Line® 2-Port	Style Line® 3-Port	Style Line® 4-Port	Style Line® 6-Port
	Office	IFP18OW	BR106C	Q106O	IFP12OW	IFP13OW
	White	Duplex	Duplex 2-Port	Duplex 4-Port	Flush 2-Port	Flush 3-Port
	Office	IFP14OW	IFP16OW	IFP26OW	IFP29OW	IFP212OW
	White	Flush 4-Port	Flush 6-Port	2-Gang 6-Port	2-Gang 9-Port	2-Gang 12-Port

Frames & Modules	Description	Color	1-Gang	2-Gang
	Front loading plate will accept any modules in three unit combinations. Angled fixtures to be used in bottom opening only. See section Y for additional information on Hubbell iSTATION modules. Each gang accepts 3 module units.	Office White	IMF1OW	IMF2OW

Modular connectors to be used with any plate with a standard modular opening. Not recommended for use with KP plates. For KP applications use KPIMBZOW bezel and appropriate Hubbell iSTATION modules located in section Y. See section Y for additional information on modular connectors.

Modular Connector Fittings	Color	Catalog Number	Catalog Number	Catalog Number
	Office White	SFFX F-Connector	SFSTSOW ST Fiber Connector	SFB10 Blank (10 Pack)
	Black housing only	SFRC110R RCA 110 Punchdown	SFSV110BK Super S-Video	FASTSCDSC6 SC to ST Duplex Adapter

Xcelerator Modular Jacks	Color	Catalog Number	Catalog Number	Catalog Number
	Office White	HXJ5EOW Cat. 5e, T568A, T568B, RJ45	HXJ6OW Cat. 6, T568A, T568B, RJ45	HXJUOW 6 Position USOC, RJ25

Note: See section Y for additional Hubbell Xcelerator modular jacks and colors.

Panduit® and Mini-Com® are registered trademarks of Panduit Corp.
Ortronics® and Series II® are registered trademarks of Ortronics/Legrand.

Wire Fill Capacity Chart and Technical Information

Non-Metallic Raceway Wire Fill Capacities															
Series	Channel	Channel Area (sq. in.)	Power (THHN/T90 Nylon)			Voice		Data (Copper Cables)					Data (Multimode Fiber Optic Cables)		
			14 AWG	12 AWG	10 AWG	4-Pair	25-Pair	Type RG59U	Cat. 5e	Cat. 6	Cat. 6A	Cat. 6 STP	(2) or (4) Fiber Round Cable	Fiber Optic Jumpers	Fiber Optic Zip Cord
			Wire O.D. (in.):	0.111	0.13	0.164	0.19	0.41	0.242	0.21	0.25	0.35	0.29	0.19	0.118
Wire Area (sq. in.):	0.0097	0.0133	0.0211	0.0283	0.1320	0.0460	0.0346	0.0491	0.0962	0.0660	0.0283	0.0109	0.0288		
			Wire Fill Capacity			40%	40%	40%	40%	40%	40%	40%	40%	40%	
PT1	A	0.29	5	8	5	4	1	3	3	2	1	2	4	11	4
PP1	A	0.38	12	11	8	5	1	3	4	3	2	2	5	14	5
PL1	A	1.03	42	34	22	15	3	9	12	8	4	6	15	38	14
PW1	A	0.30	6	10	4	4	0	2	3	2	1	2	4	11	4
PW2	A+B	1.60	41	36	22	23	5	14	18	13	7	10	23	59	22
A B	A	0.81	12	22	12	11	2	7	9	7	3	5	11	30	11
	B	0.79	12	22	10	11	2	7	9	6	3	5	11	29	11
PB2	A+B	5.72	60	36	45	81	17	50	66	47	24	35	81	210	79
A B	A or B	2.86	42	30	28	40	9	25	33	23	12	17	40	105	40
PB3	A+B+C	5.57	60	36	45	79	17	48	64	45	23	34	79	204	77
A B C	A or C	1.80	42	30	28	25	5	16	21	15	7	11	25	66	25
	B	1.97	42	30	28	28	6	17	23	16	8	12	28	72	27
PS3	A+B+C	10.58	72	66	78	150	32	92	122	86	44	64	150	388	147
A B C	A or C	3.41	42	36	42	48	10	30	39	28	14	21	48	125	47
	B	3.76	42	36	42	53	11	33	43	31	16	23	53	138	52

Note: Pathway (Raceway) fill shall be 40% maximum. Raceway fittings and outlets/receptacles reduce the cross section of the raceway system, thus reducing overall cable fill capacity.

Recommended Plate to Box Compatibility Selection Chart																
Non-Metallic Raceway Box Series		PS3 Series				PB3 Series					PB2 Series	PDB12 Series			PT12 & PW1 Series	
Plate Style	Sample Catalog Number	IND	FCIB	FCIB2G	FCIB3G	IND	IND2G	FCIB	FCIB2G	FCIB3G	IND2G	LP, S, D	TGD	TGLV	LP(B), S(BA), D(BA)	TGB
1-Gang KP Series Plate	KP8	X	X	X	X	X	X	X	X	X	X	X	X		X	
1-Gang KP Series Bezel	KPIMBZ	X	X	X	X	X	X	X	X	X	X	X	X		X	
1-Gang Standard Data Plate	IFP12OW		X	X	X	X		X	X	X		X			X	
1-Gang iSTATION Plate Frame	IMF1OW		X	X	X	X		X	X	X		X			X	
Style Line® Data Plate	IFP126OW		X	X	X	X		X	X	X		X			X	
Duplex Data Plate	IFP18OW		X	X	X	X		X	X	X		X			X	
2-Gang iSTATION Plate Frame	IMF2OW													X		X
2-Gang Standard Data Plate	IFP29OW													X		X
2-Gang KP Series Plate	KP82															X

Note: Hubbell Office White plates and devices color match all non-metallic raceway systems.

Physical Properties

(When tested in accordance with UL 5A)

Impact Resistance	5 ft. lbs.
Crush Resistance	300 lbs.
Temperature Range	-25.6° to 158° F
Flame Rating	UL94V-0
Material	UV Stabilized PVC

Codes/Standards

EIA/TIA	569A
UL Standard	UL 5A
Listings	E118895 / E119190
CSA Standard	C22.2 no. 62
Certified	LR87514

PlugTrak Specifications

Receptacle Rating	NEMA 5-15R & 5-20R
Wire	#12 AWG Stranded Copper
Receptacle Face	Thermoplastic

Wallplate Frames, Delivery Bezels, Modules and Gangable AV Wallboxes



Hubbell iSTATION Modular Wallplate Frames

Single-service, low voltage

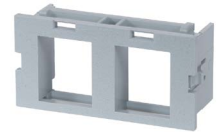
Color	1-Gang	2-Gang	3-Gang	4-Gang
Black	IMF1BK	IMF2BK	IMF3BK	IMF4BK
Gray	IMF1GY	IMF2GY	IMF3GY	IMF4GY
Ivory	IMF1EI	IMF2EI	IMF3EI	IMF4EI
Office White	IMF1OW	IMF2OW	IMF3OW	IMF4OW
White	IMF1W	IMF2W	IMF3W	IMF4W

Multi-service, power and low voltage

Color	1-Gang Decorator 1-Gang iSTATION	2-Gang Decorator	1-Gang Decorator 2-Gang iSTATION	1-Gang Decorator 3-Gang iSTATION	2-Gang Decorator 2-Gang iSTATION
Black	IMFP1D1BK	IMFP2BK	IMFP1D2BK	IMFP1D3BK	IMFP2D2BK
Gray	IMFP1D1GY	IMFP2GY	IMFP1D2GY	IMFP1D3GY	IMFP2D2GY
Ivory	IMFP1D1EI	IMFP2EI	IMFP1D2EI	IMFP1D3EI	IMFP2D2EI
Office White	IMFP1D1OW	IMFP2OW	IMFP1D2OW	IMFP1D3OW	IMFP2D2OW
White	IMFP1D1W	IMFP2W	IMFP1D2W	IMFP1D3W	IMFP2D2W

Hubbell iSTATION Stainless Steel Plates

1-Gang	2-Gang	3-Gang	4-Gang
IMSS1	IMSS2	IMSS3	IMSS4



Delivery Bezels and Modules

Color	Raceway Bezel	Hubbell iSTATION Bezel for Third-Party Raceway	Furniture Boxes
Black	-	-	HBLIMFBK
Gray	KPIMBZGY	HWAPLGY	HBLIMFGY
Ivory	-	-	HBLIMFI
Office White	KPIMBZOW	HWAPLOW	-
White	-	HWAPLW	HBLIMFWA

Third-Party Raceway Modules

Unloaded, 2-port, 10-pack

Color	Catalog Number
Black	HWM2KBK10
Gray	HWM2KGY10
Ivory*	HWM2KI10
White	HWM2KW10

Note: *Equivalent to Hubbell Office White.

Two and Three Gangable AV Wallboxes

Box	Dimensions	Top Knockouts	Bottom Knockouts	Back Knockouts	Catalog Number
2-Gang, 2" KO, 54in ³ capacity	H: 4.21" W: 4.06" D: 4.0"	(2) ½" (2) ½" – ¾" TKO*	(1) 1", 1¼", 1½" & 2"	(2) ½" – ¾" TKO	HBL985
3-Gang, 2" KO, 79in ³ capacity	H: 4.21" W: 5.87" D: 4.0"	(3) ½" (3) ½" – ¾" TKO*	(1) ½" (1) ½" – ¾" TKO* (1) 1", 1¼", 1½" & 2"	(3) ½" – ¾" TKO	HBL986

Note: *TKO (Tangential Knockout).



Low Voltage AV Wallbox Partitions

Compatible With	Description	Quantity	Catalog Number
HBL985 and HBL986	Solid divider	1	HBL989
	With pass-thru capability	1	HBL989AVD

